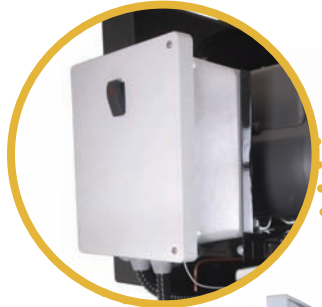


Added M Series Standard Features

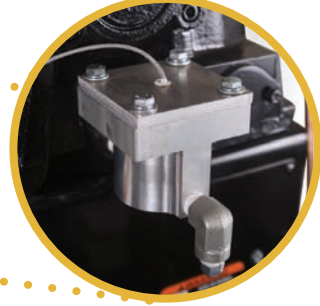
These standard features are what sets the M Series simplex and duplex air compressors apart from our standard line-up.



NEMA-4 starter box with magnetic motor starter for thermal overload protection



Air-cooled after cooler removes up to 65% of moisture and drops temperature within 10 degrees of ambient



Low oil shutdown shuts unit down when oil falls below adequate levels



Dual control on simplex models allows the electric compressor to be operated in start/stop mode or continuous run



Vibration isolator pads protect the tank from stress



Tank drain automatically drains liquid from air receiver

ACS-23105-80VM